

Cache Settings

As you may know, when you visit a web page it is cached on your hard drive. Every time you go back to visit that page it pulls the cached version from your hard drive. This is fine with a static web page, but ours is not and needs to be updated every time you visit. So by making this change we have forced your computer to go out to the server to get the new page.

Internet Explorer

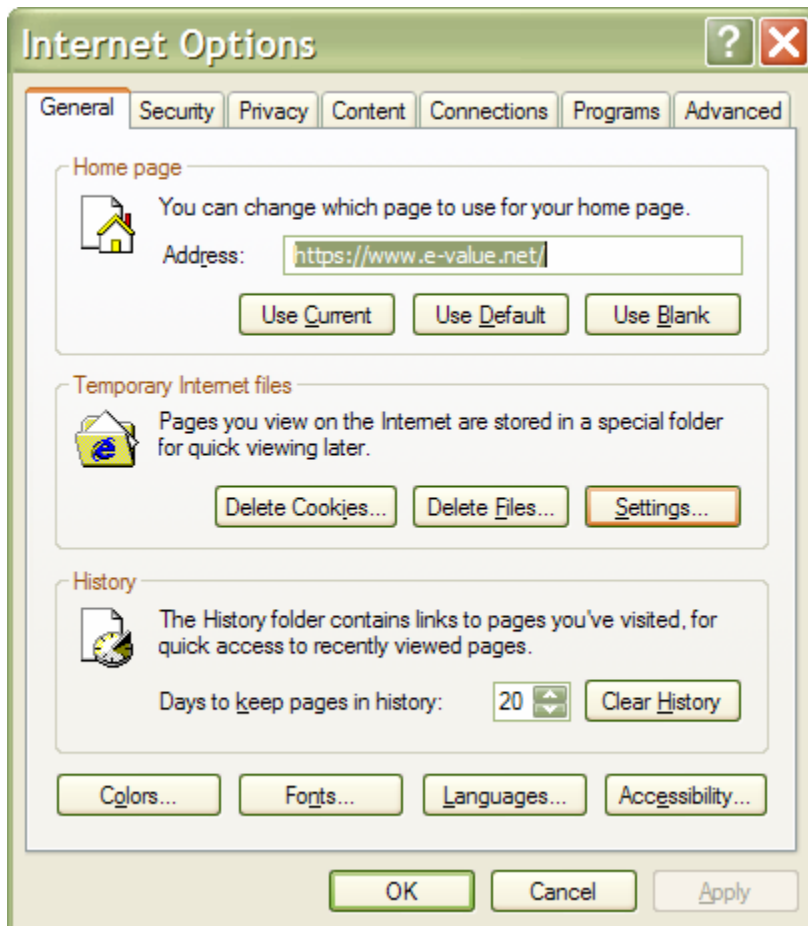
Tools Menu

Internet Options

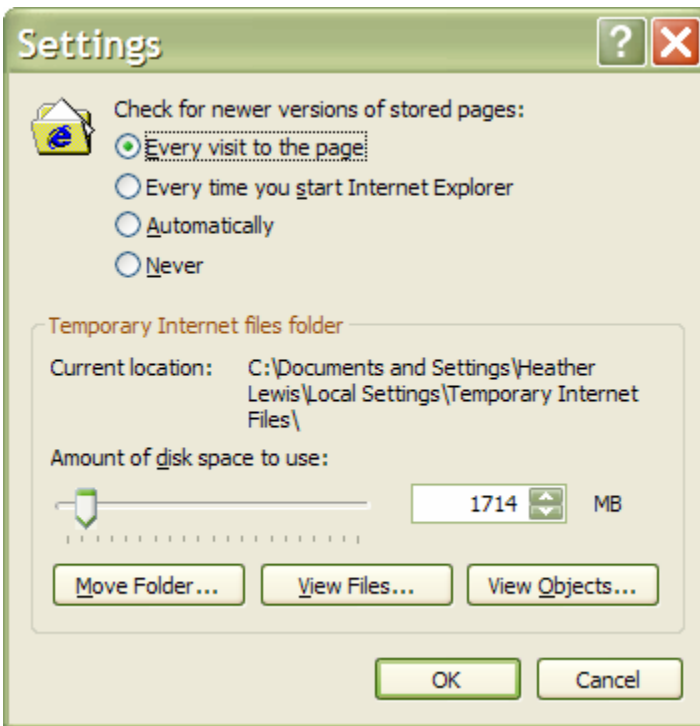
General tab

Temp Internet Files

Settings button



Check for newer versions of stored pages. Needs to be every visit to the page.
Click OK.



Netscape

Edit: Preferences

White section on left. Find the word Advanced. Click on arrow.

Go to Cache

“Compare the page in the cache to the page on the network”

This needs to be “Every time I view the page”.

Click OK

