

# The Residents Report

Summer 2008

UCSF Office of Graduate Medical Education



## Looking Forward to 2008-2009!

Robert B. Baron, MD, MS,  
Associate Dean for Graduate Medical Education

The next twelve months promise to be one of the most important and historic in our nation's history. We will have a new president, quite possibly an African American man. We are likely to have the deepest economic downturn in memory. The war in Iraq will enter its 6<sup>th</sup> (maybe last?) year. We will have a renewed national conversation about health care reform and universal coverage. We will have an election in San Francisco that will determine the future of San Francisco General Hospital.

We also anticipate another remarkable year for GME at UCSF!

This spring, as we congratulate and say goodbye to our departing residents and fellows, we welcome 400 new interns, residents, and fellows to UCSF. After many years of planning and anticipation, we are especially pleased to welcome our first cohort of 12 emergency medicine interns. It has been many years since we began a new core residency program at UCSF!

We look forward to several new initiatives in resident and fellow well-being. Led by Dr. Mary McGrath and our Resident and Fellows Affairs (RFA) Committee, our new leave policy will go into effect July 1, 2008. Our new Director of GME Well-Being Programs, Dr. Rachel Goldstone, will organize new dinner meetings on well-being topics. We also look forward to new opportunities for resident and fellow participation in community activities (like the upcoming AIDS walk), an innovative "ticket exchange" program, and efforts to improve childcare. Trainees will also benefit from the increase in housing allowance included in this year's compensation. Initiated by the Residents' Council and supported by the UCSF Medical Center, VA Medical Center, other affiliated hospitals and our clinical departments, this increase will help with the continuing expenses of living in San Francisco.

Curricular innovations will also highlight 2008-2009. As described by Dr. Josh Adler on page 3, the Pathways to Discovery Program will begin full-force this July. This is a remarkable new initiative which will be watched (and likely imitated) around the country. We anticipate an even larger Resident Research Symposium (see page 3) next spring, featuring the research residents successfully complete this coming year.



Our new GME Management System will make life easier for many of our staff as we link multiple information systems. In addition, the new system will provide new resources for assessment of learning and of competency. We will provide a new toolbox of assessment tools, and continue our work to integrate 360-degree evaluations and portfolios into our assessment strategies. Our GME web site will continue to expand and serve as a key resource for trainees, including video presentations of GME Grand Rounds.

The interface between resident and fellow education and the imperative to provide highest quality patient care are moving closer and closer. We will see new educational opportunities for residents and fellows in issues regarding patient safety and quality of care. We will seek housestaff participation at all levels of medical center decision-making. The housestaff incentive program will continue with new goals in patient satisfaction, medical order writing, and pain control. We will also see an expanded series of workshops and professional development seminars for chief residents, again led by Dr. Arpana Vidyarthi.

### in this issue

Looking Forward	1
News from SFGH	2
News from VAMC	2
Intro to Pathways	3
Research Symposium	3
Benefits Enrollment	4
News from the Library	5
The MedEd Portal	5
Housestaff Awards	6
Out & About	8
10 Questions	10
Meet the GME Team	11
GME Diversity	12
GME Grand Rounds	12
GME Cypher	12

UCSF School of Medicine  
Graduate Medical Education  
500 Parnassus Ave. MU 250E  
San Francisco, CA  
94143-0474  
tel 415.476.4562  
fax 415.502.4166  
www.medschool.ucsf.edu/gme

## Looking Forward to 2008-2009!

(continued from page 1)

Robert B. Baron, MD, MS,  
Associate Dean for Graduate Medical Education

This year will also see the beginning of the implementation of computerized physician order entry (CPOE). It will be essential to have resident and fellow leadership as we develop these long-awaited tools and continue to improve our existing information systems (see interview with Dr. Russ Cucina, page 10-11).

With our new strategic plan highlighting the importance of diversity at UCSF, it is our hope that 2008-2009 will also see continued advances in diversity and cultural awareness at UCSF in GME. Led by Dr. Rene Salazar, we will have an ambitious program of outreach to prospective trainees and elective rotations for senior students. We will enhance our efforts in mentoring and continue to link with efforts in the medical school. One of the primary goals will be to make every effort to attract our own best students to stay at UCSF for residency. This year, one-third of the medical school class did, and it is our goal to continue this most positive trend.

As we look forward to '08-'09, we also want to thank all of those finishing this year. Many will be staying on for fellowship and faculty positions here, while others will join other top academic health centers, community hospitals, and medical groups. It is our hope that our programs have met your goals; we know that you have met our highest expectations. Special congrats to those who have been recognized by Departments, the Medical School, and the Medical Centers (see awards page 6-7). And special thanks to the Chief Residents, whose amazingly hard work and leadership have contributed greatly to making this year a success for all!



## NEWS FROM SFGH

Doug Eckman, Dean's Office, SFGH

San Francisco General Hospital extends a warm welcome to all new residents and fellows, and welcomes back those residents continuing rotations at SFGH in 2008-09. Prior to doing their initial rotation at SFGH, all new residents or fellows must review SFGH Orientation material. The material is posted on the GME web page, entitled "SFGH Hospital Orientation". For purposes of documentation, residents are to send an email to their program and site coordinators stating that they completed a review of the hospital's orientation material. We hope to automate this latter procedure in the near future.

Also, SFGH becomes a non-smoking campus effective July 1, 2008. This will require major effort

## NEWS FROM THE SF VA MEDICAL CENTER

Patricia Cornett, MD, VAMC

The San Francisco VA Medical Center recently opened a new high-tech Simulation Center that creates realistic medical scenarios to allow clinicians to improve and refine their medical skills and techniques. The momentum for this program came from the institution's strong commitment to quality of care and patient safety, with the primary focus being improving the efficiency and effectiveness of the entire health care team.

The Simulation Center, located in the library, includes a simulation lab that can be configured as a patient room, an intensive care unit room, or an operating room, as well as a classroom and communication room. Staff participate in hands-on educational programs specifically designed for physicians, nurses, and other health professionals with a focus on healthcare team training. Simulation-based exercises provide a simulated environment to imitate a real-life patient care setting where staff and residents can practice and master skills in a non-threatening, multidisciplinary environment.

The simulator has a full-size SimMan, which is a computer controlled mannequin whose major body systems have been programmed to respond realistically to the environment, medicines, and other interventions. The mannequin may be used to practice a number of physical examination techniques or medical procedures such as: tracheal intubation, cardiopulmonary resuscitation, chest tube insertion, and IV insertion. Other simulator devices train airway management, chest tube placement, and central line placement.

Site directors in various programs including surgery and medicine are planning uses of the simulation center for residents and fellows with the eventual plan to include joint training amongst specialties.

Lastly, a quick update on the seismic project includes noting that there is one completed enhancement on 3B with new patient rooms and work stations. Nearing completion is the strengthening of the building entrance signaling that the long awaited opening of the normal entrances to the inpatient and outpatient areas should be happening in June.



(continued from News from SFGH)

on the part of all those working at the hospital. More information about SFGH as a Smoke Free Campus is located on the SFGH Dean's Office website at: <http://www.medschool.ucsf.edu/sfghdean/> All residents, new and continuing are strongly urged to review the material.

### SFGH GMEC

The next SFGH GMEC meeting is scheduled for August 14, 2008 at 5:30 PM, in 5K8. A light meal will be served.

## Introducing Pathways to Discovery

Josh Adler, MD,  
Associate Professor of Medicine,  
Director, Pathways to Discovery Program

In January 2006, the School of Medicine initiated a process to increase the extent of inquiry, innovation, and discovery in the training programs at UCSF such that these concepts would be more thoroughly explored during training and become engrained parts of the careers of all UCSF trainees. The ultimate goal of this initiative is to foster the passion and commitment that all UCSF trainees have for making a difference, and providing tools and experience to increase the impact of their contributions to health and health care.

Two years of deliberations, planning, and development culminated in a School of Medicine retreat in January, 2008 during which the Pathways to Discovery (PTD) program was introduced and launched. The PTD program is available to residents, medical students, fellows, and students from the schools of dentistry, nursing, and pharmacy.

PTD is a longitudinal program in which trainees can pursue their interests in one of five areas relevant to health or health care. The five pathways are: Global Health, Molecular Medicine, Clinical and Translational Research, Health Professions Education, and Health and Society (including the social sciences, health disparities, community engagement, and health policy).

The structure of the Pathways program is modeled on the existing Areas of Concentration and Areas of Distinction programs. The AoC and AoD programs will be formally incorporated into the Pathways program beginning in July, 2008.

Pursuing a pathway entails three distinct components: completion of required courses, participation in a specific project working closely with a faculty mentor, and completion of a legacy. The legacy may be thought of as the "product" of the project work and may take the form of a traditional scientific manuscript, a new piece of curriculum that has been incorporated into one of the UCSF training programs, or the creation of a new clinical service designed to reach an underserved population.

Scheduling time in a resident's schedule for these enriching opportunities will be a challenge. Many program directors are committed to making these opportunities available to residents and the Pathway directors are equally committed to developing flexible schedules and formats for the required coursework and experiences.

The leadership of the PTD program are as follows. Please contact any of these individuals for additional information: Josh Adler, MD (overall program director), Chris Stewart, MD (Global Health), Harold Bernstein, MD and Bob Nussbaum, MD (Molecular Medicine), Dan Dohan, PhD (Health and Society), Carrie Chen, MD (Health Professions Education), George Sawaya, MD and Doug Bauer, MD (Clinical and Translational Research).

## 2008 Resident Research Symposium

Emily von Scheven, MD, MAS  
Associate Professor of Clinical Pediatrics in  
Pediatric Rheumatology,  
CTST Resident Research Co-Director

On May 12th, 2008 the Clinical and Translational Research Institute (CTSI) sponsored the first research symposium for UCSF residents conducting clinical and translational research.



Approximately 50 residents and faculty from across the Departments gathered at Millbery Union to share their work. Dr. Sam Hawgood, Interim Dean, introduced Dr. Eugene Washington, UCSF Executive Vice Chancellor, who delivered an inspiring keynote address on the many opportunities facing young physician scientists who are interested in improving health through clinical and translational research activities.

Approximately 30 residents submitted abstracts for review. Dr. Joshua Cohen (Obstetrics & Gynecology), Dr. Hooman Kamel (Neurology) and Dr. Jennifer Poehls (Internal Medicine) were selected to present their papers orally. The remaining abstracts were presented as posters during a lively reception.

This research symposium was conducted as part of several initiatives of the CTSI to facilitate clinical and translational research among residents at UCSF.

Further information regarding formal courses and funding opportunities can be obtained at: <http://www.ctst.ucsf.edu/residents.htm> or by contacting Dr. Douglas Bauer at [DBauer@psg.ucsf.edu](mailto:DBauer@psg.ucsf.edu) or Dr. Emily von Scheven at [evonsche@peds.ucsf.edu](mailto:evonsche@peds.ucsf.edu)



# Benefits Open Enrollment for Residents & Clinical Fellows

June 1 - July 31, 2008



UCSF Mission Bay Campus

## Welcome All New Housestaff!

The University provides the residents and clinical fellows a robust package of health and welfare benefits with exceptional value. In fact, UCSF fully pays the monthly premium for all your plans with the exception of the Blue Cross PPO plan.

Each year UCSF partners with broker Saylor & Hill to negotiate our health plan rates. We have good news...for the plan year 2008-09 there will be no increases in housestaff costs for any of the programs. This outcome is to be commended given premium increases nationally have been trending between 10% and 12% for 2008.

Please take time to become familiar with your benefits early on so that you make get the most out of your plans. For information about your health plans, please go to: <http://ucsfhr.ucsf.edu/index.php/residents/>, or contact your health plan directly with questions about coverage.

We at the Housestaff Insurance Desk work closely with your program coordinator and department to facilitate your benefits enrollment or changes to enrollment and triage benefits information to you. Our goal is to ensure you are well supported by your benefit plans during your engagement with UCSF! Again, we extend a warm professional welcome to all of you!

## Housestaff Insurance Desk Central Human Resources

*The Office of GME wishes to acknowledge the efforts and hard work of the Program Coordinators and other program staff in the implementation process of the new GME Management System.*

*Please know that we appreciate all you do for your Residents and Clinical Fellows.*

### Benefits Open Enrollment Presentations

Parnassus Campus, Room N-217

Thursday, June 19th, 5:30 pm

Tuesday, June 24th, 5:30 pm

### Open Enrollment Highlights:

- Medical plan choices remain as Health Net HMO and Blue Cross PPO
- Medical Plan Comparison Summary
- No changes to the plan designs for health plans offered
- All co-pays, deductibles and covered services remain the same for all plans
- UC continues to fully pay for the monthly premium\* for all plans except Blue Cross PPO
- Blue Cross PPO premium paid by residents and fellows remains the same: (\$30 self, \$60 self + Child(ren) or Self + Spouse/Domestic Partner, and \$90 family)

Please note that if you are enrolled in a medical plan you are automatically enrolled in:

Delta Dental  
VSP (Vision Service Plan)  
Reliance Long Term Disability  
Reliance Life and AD&D (Accidental Death & Dismemberment) Insurance

Your family members enrolled in your medical plan are automatically enrolled in:

Delta Dental  
VSP (Vision Service Plan)

### Process to Make Open Enrollment Changes:

Please complete the following forms and submit all forms to your Program Coordinator prior to July 31st:

1. Insurance Action Form
2. Beneficiary Form
3. Declaration of Domestic Partnership (if applicable)

### Effective Date:

All changes will be effective July 1, 2008. However, please note it may take 30-60 days for your health plan to recognize a change in enrollment and mail out new member I.D. cards.

### Questions and More Information:

For information about Open Enrollment, medical plan choices, and your other health plans go to:

<http://ucsfhr.ucsf.edu/index.php/residents/>

If you have any additional questions, please **contact your Program Coordinator.**

\*The contribution UC pays for your benefits may be subject to taxation. Please review the Taxability Letter for Residents and Clinical Fellows.

If you do not want to make changes to your health insurance, you do not need to take any action.

## NEWS FROM THE LIBRARY

Josephine Tan, MLIS

*Welcome to all new residents and fellows! The Library has many resources at your fingertips to help with your research, information management, and personal interests.*

**GALEN, the name of the Library's website, is at <http://library.ucsf.edu>**

**Whether you are new to UCSF or a seasoned UCSF colleague, here are some Library resources that highlight the tools we have for you.**

### Clinician's Toolbar

Download this Library toolbar to your desktop browser for one-click access to GALEN (the Library's homepage), UpToDate, Clinical Resources, Online Journals, PubMed, Drug Information.

URL: <http://library.ucsf.edu/research/galentools/index.html#clinician>

### Access Library resources remotely

You can access our resources when you are not on campus by using the UCSF VPN (virtual private network.)

REQUEST VPN ACCOUNT USERNAME & PASSWORD:

URL: <http://snipurl.com/2c2yi>

URL: <http://vpn.ucsf.edu>

### UC-eLinks to access articles

When viewing an abstract in any of the databases or journals we subscribe to, click on the orange UC-eLinks icon to obtain the full-text or request that item.

More details on UC-eLinks at

URL: <http://library.ucsf.edu/db/ucelinks.html>

### Online Textbooks

Under the "Key Resources" dropdown menu on the GALEN homepage, you can access popular online textbooks from the resources listed as AccessMedicine, STAT!Ref, and MDConsult.

URL: <http://library.ucsf.edu>

### RefWorks

Set up a free RefWorks account to download and manage your citations to aid in your research and publications. It's a web-based alternative to EndNote, and it also lets you transfer records from RefWorks into EndNote.

URL – set up an account: <http://snipurl.com/21a3L>

URL (off campus access): <http://refworks.com> (enter code RWUCSF)

URL – tutorial: <http://refworks.com/tutorial>

### Online Tutorials on GALEN

View short multi-media tutorials covering database searching, information management, and tips & tricks

URL: <http://www.library.ucsf.edu/edtech/tutorial>

### Medical Education Literature Searching Blog

A UCSF librarian-created blog that covers quick tips on searching resources that aid in medical education research and other fun web searching tips.

URL: <http://mededlit.blogspot.com>

### Blogs for Medical Information

A compilation of blogs related to medicine.

URL: <http://library.ucsf.edu/collres/reflinks/blog>

*If you have any questions regarding these resources, literature searching assistance, or tailored presentations for your department, please contact me, Josephine Tan at: 415-476-2534 or [tan@library.ucsf.edu](mailto:tan@library.ucsf.edu)*

MORE INFO: <http://library.ucsf.edu/>

## The MedEd PORTAL

A New Age Online Publication for Teaching Materials

*Michael Saleh*



In 2005 the Association of American Medical Colleges (AAMC) developed and launched MedEdPORTAL as a free publishing venue and dissemination portal to support educators and learners as they create and use on-line teaching materials, assessment tools, and faculty development resources around the world. Examples of MedEdPORTAL publications include tutorials, virtual patients, cases, lab manuals, assessment instruments, faculty development materials, etc. MedEdPORTAL publications are peer-reviewed and cover the continuum of medical and dental education (i.e. undergraduate, graduate, and continuing medical and dental education).

From its conception in 2005, MedEdPORTAL serves the public around the globe by offering its services at absolutely no charge. There is a wealth of virtual patients (nearly 100 indexed) available on the portal today. The multitude of scenarios covers educational and clinician-based scenarios and follows a variety of pedagogical formats. As an internationally available service, MedEdPORTAL facilitates sharing of high quality peer-reviewed educational material and promotes collaboration and educational scholarship across institutions. An educational resource successfully peer-reviewed and published through MedEdPORTAL is comparable to a peer-reviewed research paper published through a reputable print-based journal and should be considered a compelling scholarly contribution suitable to support promotion and tenure decisions.

To find out more, please visit: [www.aamc.org/mededportal](http://www.aamc.org/mededportal) today. You can browse by discipline or do a more thorough search by clicking 'Find Resources' to search by keyword. If you'd like to receive free copies of the training booklet (one-stop guide for everything MedEdPORTAL), a link to a brief training presentation, or have any inquiries please don't hesitate to contact Michael Saleh at [mededportal@aamc.org](mailto:mededportal@aamc.org). Also, please visit the homepage regularly for postings regarding free online training workshops that will be offered monthly beginning in June!

UCSF School of Medicine  
Graduate Medical Education  
500 Parnassus Ave. MU 250E  
San Francisco, CA  
94143-0474  
tel 415.476.4562  
fax 415.502.4166  
[www.medschool.ucsf.edu/gme](http://www.medschool.ucsf.edu/gme)

# 2007- 2008 Housestaff Awards, Honors & Highlights



## MEDICAL CENTER Awards 2008

Nicole Sirotin, MD - Resident, Medicine  
- Medical Center Exceptional Physician Award

## School of Medicine Awards 2008

The 2008 Recipients of the "Teaching Excellence Award for Cherished Housestaff (TEACH)" nominated by graduating Medical Students were:

Nobl Barazangi MD – Clinical Fellow, Neurology  
Carson Lawall, MD – Resident, Neurology  
Fenglaly Lee, MD - Resident, Ob/Gyn Fresno  
Tai Lockspeiser, MD - Resident, Pediatrics  
Anne Schafer, MD – Clinical Fellow, Medicine

Kaiser Awards "Outstanding Contribution to an Elective Essential Core Teaching Award" from the Class of 2010

Ramin Jamshidi, MD - Resident, Surgery

## Alpha Omega Alpha Honor Medical Society

Three residents/clinical fellows were honored by the UCSF chapter of Alpha Omega Alpha Honor Medical Society this year for their teaching and mentoring skills and were inducted into the national AOA society at an awards banquet on May 16, 2008.

Those who were inducted in May are:  
Lawrence Haber, MD – Resident, Medicine  
Jennifer Ho, MD – Clinical Fellow, Cardiology  
Michael Pickens, MD – Clinical Fellow, Pediatrics

## Clinical and Translational Research Institute (CTSI)

At the 2008 Research Symposium, three residents were selected to present their papers orally.

Joshua Cohen, MD - Resident, Ob/Gyn  
Hooman Kamel, MD - Resident, Neurology  
Jennifer Poehls, MD - Resident, Medicine

## ANATOMIC PATHOLOGY

Han Sung Lee, MD PhD, Excellence in Resident Teaching award

## CARDIOLOGY

David Lao, MD - The Stethoscope Award  
Ramin Farzaneh-Far, MD - AHA Fellow-to-Faculty Transition Award  
Colleen Johnson, MD - AHA Fellowship  
Lisa Wilsbacher, MD, PhD - AHA Fellowship  
Doreen DeFaria Yeh, MD - AHA National Clinical Research Award  
Robert Yeh, MD, MPH - Schering Plough Grant  
Bill Pei-Chin Hsieh, MD - Best Scientific Poster Award, The American College of Cardiology

## DIABETES, ENDOCRINOLOGY & METABOLISM

Mickie Cheng, MD, PhD - Mentored Clinical Scientist Development Award  
Ed Hsiao, MD, PhD - NOF Young Investigator Award  
Amnon Schlegel, MD, PhD - Mentored Clinical Scientist Development Award  
Amnon Schlegel, MD, PhD - Endocrine Scholars Award

## DIAGNOSTIC RADIOLOGY

Saadia Chaudhary, MD - Elmer Ng Outstanding Resident Award  
Nick G. Costouros, MD - Margulis Society Outstanding Resident Research Award  
Nick G. Costouros, MD: Radiological Society of North America Roentgen Resident/Fellow Research Award

## FAMILY AND COMMUNITY MEDICINE

Trudy Singzon, MD, MPH - Roberts Wood Johnson Clinical Scholar  
Jessica Evert, MD, MPH - Award for Exemplary Service to the Family Health Center at SFGH  
Veronica Rivera, MD - Krevan's Award for Clinical Excellence

## LAB MEDICINE

Michael Bonham, MD, PhD - Laurence J. Marton Award for Excellence in Research  
Anne Deucher, MD PhD - Laurence J. Marton Award for excellence in research  
Walden L. Browne, MD PhD - Laurence J. Marton Award for excellence in research

## MEDICINE

Delphine Tuot, MD - Keith Johnson Award  
Brian Moyers, MD - Jeffrey Weingarten Award  
William Huen, MD - Community Service Award  
Amy Noack, MD - Community Service Award  
Prashant Bhawe, MD - Thomas Evans Teaching Award  
Nicole Sirotin, MD - Reza Gandjei Humanism Award  
Nicole Sirotin, MD - MEDICAL Center Exceptional Physician Award  
Michael LaFemina, MD - Professionalism Award  
Lawrence Haber, MD - Elected to Alpha Omega Honor Medical Society for excellence in Teaching & Mentoring  
Anne Schafer, MD - School of Medicine TEACH Award  
Jens Lohr, MD, PhD - Floyd Rector Basic Science Research Award  
Lawrence Lazar, MD - Floyd Rector Clinical Science Research Award  
Vanessa Thompson, MD - Krevan's Award for Clinical Excellence  
Bao Tran, MD - SFGH Krevans Award

## NEUROLOGY

Hooman Kamel, MD - CTSI Research Award  
Carson Lawall, MD - School of Medicine TEACH Award  
Nobl Barazangi, MD - School of Medicine TEACH Award

## OBSTETRICS, GYNECOLOGY AND REPRODUCTIVE SCIENCES

### Resident and Fellow Teaching Awards:

Melissa Rosenstein, MD - PGY 1  
Sarah Wilson, MD - PGY 2  
Emily Yu, MD, MPH - PGY 3  
Nicolas Rubashkin, MD, MA - PGY 4  
Anjali Kaimal, MD - Fellow

Ngoc Phan, MD, Chief Resident - Consultant of the Year Award by Nurse-Midwives of SF at UCSF/SFGH  
Nick Rubashkin, MD, Chief Resident - Consultant of the Year Award by Nurse-Midwives of SF at UCSF/SFGH

## 2007 - 2008 Housestaff Awards

### OPHTHALMOLOGY

Shelley Day MD - Garcia/Asbury Award for best clinical research paper  
Alejandra de Alba Campomanes, MD - Hogan/Garcia Award for best laboratory research paper  
Mark Pennesi, MD, PhD - Heed Fellowship Award  
Alejandra de Alba Campomanes, MD - 2008 Starr E. Shulman MPA Fellowship Grant  
Thomas Hwang, MD, PhD - The Walsh Society award for best presentation  
Thomas Hwang, MD, PhD - The North American Neuro-ophthalmology Society award for best presentation

### ORTHOPAEDIC SURGERY

Saam Morshed, MD - Outstanding Chief Resident  
Rosanna Wustrack, MD - Outstanding Junior Resident

### OTOLARYNGOLOGY

Andrea Yeung, MD - 2007 Kelvin Lee, MD Resident Award  
**Residents Research Symposium awards**  
Frederick Roediger, MD - 1st place  
Ted Man, MD, PhD - 2nd place  
Krista Rodriguez-Bruno, MD - 3rd place  
**Bay Area Resident Research Symposium award for Clinical Research**  
Krista Rodriguez-Bruno, MD - 1st place

### PEDIATRICS

#### Resident Teaching Awards:

Dave Gordon, MD - PGY 1  
Tai Lockspeiser, MD - PGY 2  
Susie Kussmaul, MD - PGY 3

Lisa Meneses, MD - PGY 1 - Krevans Award  
*Recognizes an intern who demonstrates "excellence in patient care as exemplified by clinical competence, professional conduct, concern for patients and interaction with all levels of staff, including peers, at SFGH."*

Gabriela Maradiaga-Panayotii, MD - PGY 2 - Brown-Coulter Award.

*For the junior resident who "best demonstrates comprehensive clinical excellence as well as advocacy and compassion for underserved children in San Francisco"*

Lisa Dillabaugh, MD - PGY 3 - Grossman Award  
*For outstanding qualities as a resident, and taking a leadership role in the community*

James Howard, MD - PGY 3 - Lucy Crain Award  
*In recognition of three years of exceptional performance providing primary care to patients with special needs at the Parnassus continuity clinic.*

Dave Gordon, MD - PGY 1 - Ahmad GhaneaBassiri, MD Pediatric Intern Award  
*For excellence in providing compassionate, patient-centered care.*

Mark Lo, MD - PGY 3 - Rudolph Award  
*For the resident who has been "most supportive of, and empathetic towards, nurses, faculty and fellow residents."*

Elizabeth (Liz) Rogers, MD - Postdoctoral Fellow Teaching Award

### PSYCHIATRY

Kristen Brooks, MD - Edwin F. Alston Award for Outstanding Psychiatry Resident  
Erick Hung, MD - Edwin F. Alston Award for Outstanding Psychiatry Resident  
Uma Lerner, MD - Creative Activity Award  
Laughlin Award for Excellence in Clinical Care  
George Lerner, MD - Laughlin Award for Excellence in Clinical Care  
Emily Lynn, MD - Laughlin Award for Excellence in

Clinical Care  
Deborah Raphael, MD - Laughlin Award for Excellence in Clinical Care  
Kristina Schwerin, MD - Laughlin Award for Excellence in Clinical Care  
Matthew Fitzpatrick, MD - Public and Community Service Award  
Jonathan Kalkstein, MD, PhD - Research Award  
Steven Lieske, MD, PhD - Research Award  
Anne Richards, MD, MPH - Research Award  
Robin Bitner, MD - Resident Teaching Award  
Melanie de Luna, MD - Resident Teaching Award

#### Medical Student Teaching Award for Residents:

Emily Baldwin, MD, EdM - PGY4  
Meredith Jones, MD - PGY3  
Ilije Fitzgerald, MD, MS - PGY2  
Danielle Carlin, MD - PGY1  
David Soskin, MD - PGY1

### RADIATION ONCOLOGY

Kavita Mishra, MD, MPH - Roentgen Research Award

### SURGERY

Jonathan Carter, MD - The Achievement Award  
Matthew Clifton, MD - The Achievement Award  
*The Achievement Award, chosen by the faculty, honors a chief resident who has demonstrated, by outstanding clinical work, teaching and/or research efforts, great promise as a future leader in academic surgery. The award is named in honor of Esther Nusz, a former patient of Professor Emeritus Dr. Maurice Galante.*

Matthew Clifton, MD - The Compassion Award  
*The Compassion Award established in 1997 by Ms. Jane Chesson and family in honor of one of our residents, Dr. Anthony Azakie. This award will be given annually to a resident who has shown outstanding compassion to patients and families in the course of caring for their illness.*

Jonathan Carter, MD - The Teaching Award  
*The Teaching Award, established in 2003, is to recognize a chief resident who demonstrated the greatest commitment to teaching the art and science of surgery. It is awarded in honor of Dr. Haile T. Debas because of his dedication to teaching. The recipient is selected by faculty and fellow residents.*

### UROLOGY

Northern California Resident Research Seminar:  
David Aaronson, MD - 5th place, Clinical Research  
Jared Whitson, MD - 1st place, Basic Science  
Benjamin Breyer, MD - 3rd place, Basic Science

American Society for Reproductive Medicine:  
Michael Eisenberg, MD - ASRM in Training Award for abstract, "A Novel Form of the 'Whitaker Test' for Ejaculatory Duct Obstruction"

7th National Urology Resident Preceptorship Program in Female Pelvic Medicine and Reconstructive Surgery:  
Benjamin Breyer, MD will be attending at the Cleveland Clinic

American Urological Association Conference:  
Benjamin Breyer, MD - Watson Scholar  
Jared Whitson, MD - Watson Scholar

Alan Shindel, MD - Astella Scholar, UCSF, Molecular Mechanisms of Adipose Derived Stem Cell Therapy in Cavernous Nerve Injured Rats



## "OUT & ABOUT" from the Resident & Fellow Affairs Committee

Where members of the Resident and Fellow Affairs Committee recommend their favorite scenes outside UCSF.

**Iljie Fitzgerald, MD, MS,  
Adult Psychiatry Resident**



There are several places in this wonderful city that could be described as peaceful and calming, but I really believe that one of the most beautifully serene experiences one can have in San Francisco is to be seated inside "**Three Gems**", a skyscape installation by James Turrell at the de Young Museum in Golden Gate Park. A good friend (and fellow resident) introduced me to this other-worldly piece, with its eerie silence, cool, rough surfaces, and a perfectly round opening to the sky. The entrance is tucked away in the outdoor sculpture garden, and ushers you into the perfect place to decompress after a clinically busy stretch so you can find a new frame of mind in which to enjoy the rest of the museum and the park.

A San Francisco institution, **Green Apple Books** (506 Clement Street, in the Inner Richmond) is a lovely place to spend a lazy Sunday afternoon, especially when it's foggy and cold outside. This bookstore, with its extensive selection of books in every imaginable category, also carries many used and remainder books for folks browsing for a bargain, and has a very knowledgeable, well-read staff who are happy to share their recommendations.

Hungry for some BBQ? Try a drive across the bay to Oakland, where you'll find **Everett & Jones** in Jack London Square. This family business has grown and thrived based on the tastiness of its smoky-sweet family-secret barbecue sauce (available in mild, medium, and hot – and this is truly spicy!) and its tender beef brisket, house-made sausage links, pork ribs, and chicken, all slow-cooked in the in-house smoker, loaded with a combination of various flavorful woods. The homemade side dishes are also quite good,

including staples such as collard greens, yams, and corn bread, and they also make a mouthwatering sweet potato pie for dessert, if you still have room.

Be sure to mark your calendars for the annual **Hardly Strictly Bluegrass Festival**, which will be happening October 3-5, 2008 in Golden Gate Park. The excess of extraordinary music by an unreal lineup of musicians all in one place seems unbelievable, until you realize that it's absolutely free (thanks to the donation of a venture capitalist and accomplished amateur banjoist who funds the whole thing), at which point, it really \*is\* unbelievable. Last year's lineup (and each year is better than the last) included Emmylou Harris, Earl Scruggs, John Prine, Steve Earle, and dozens of other performers, and the positive energy from the crowd was palpable throughout the weekend.

For one of the best places to watch the day ease into night, check out a gem of a park, the small, uncrowded **Grandview Park** (also known as Turtle Hill), at Moraga and 14th Ave, just a few blocks from UCSF. After a brief but somewhat steep climb, this hill affords you incredible 360-degree views of the city, and on a clear day, the sunset over the Pacific Ocean is nothing short of spectacular.



### Everyday • Errands

CONVENIENT - RELIABLE -  
AFFORDABLE -  
MONTHLY SPECIALS!

Everyday Errands is a complementary service - a benefit brought to you by UCSF Medical Center & Children's Hospital.

Free up time, and leave your errands to Everyday Errands. You pay only the retail cost for the work you request. You can reach the Everyday Errands by phone, email, online and in person.

[http://serviceexcellence/everyday\\_errands/](http://serviceexcellence/everyday_errands/)  
Parnassus: 415-353-9135  
Mount Zion: 415-885-7345

**Christine M. Glastonbury, MBBS**  
**Associate Professor of Clinical Radiology,**  
**Department of Radiology,**  
**Chief of Neuroradiology, Mount Zion &**  
**VA Medical Center**

I like to think of myself as Californian although I am not a native of California. In fact I am not even a native of the United States. I came from Australia in 1998 for a neuroradiology fellowship – in Salt Lake City – and after a month decided that the way in which medicine was practiced in the US was the way I wanted to work. Three years later I was engaged to an American and moving to San Francisco, convinced there was nowhere better to live or work in the world...until we started looking to buy a house.

I now have two children and live not far from Mount Zion, in what used to be part of the Western Addition, but which is referred to in the Sunday real estate listings as “Lower Pacific Heights.”

There are many benefits of living in this neighborhood, aside from the obvious advantage of relying on the UCSF shuttle system to commute to work every day (how GREEN is that?!), and that’s where I start my list of favorite things about my San Francisco:

**Fillmore Street**

- Coffee houses for every taste: Peet’s, Starbucks, Tully’s, Royal Grounds for Coffee and the Coffee Bean and Tea Leaf (!) all within four short blocks of each other. If you’re looking to linger and chat then there’s also the Grove (b/w California & Pine) where you can plug in your laptop and sloooooowly drink your way through their enormous lattes. There aren’t as many power outlets compared to the Grove’s Chestnut street location, but the place is cosy and comfortable and the outdoor tables are great on a sunny day. The food is simple but good: the apple chicken salad is both enormous and delicious!
- Tango Gelato (between California & Pine) – Go on, try just two before you buy...
- Clay Street Cinema – one of the last old-style neighborhood cinemas with over-buttered popcorn but always interesting foreign films.
- A wide range of gift, clothing, homeware, salons and shoe stores between Pine and Jackson, to cover many tastes and price points.

Aside from Fillmore Street, Pacific Heights offers **Laurel Village** (also on the UCSF shuttle route) and the nearby **San Francisco Jewish Community Center** on the corner of California and Presidio. This center has many lecture series and music events and a great gym. The gym offers a discount to UCSF employees for membership, but if you’re already signed up at Millberry, you might still consider the JCC’s relatively cheap massages in their no-fancy-frills “spa.” I highly recommend Marcia or Rafael for a relaxing massage (they both also do



prenatal massage) – or Claudia if you’re into some serious deep tissue workout.

Lest you think me all play, shopping and coffee, my weekends are pretty much consumed with young kids and there are some favorite spots we go with our almost four-year-old (and now a baby too):

- Saturday morning farmer’s market at the **Ferry Building**. Fresh coffee, fresh organic fruit and vegetables, flowers, busker-style music and Hayes Street Grille bacon breakfasts... what’s not to like? I tend to follow the people who seem to know what they’re doing and shop in stalls that look busy, and where they’ll let me taste-test things. They’ll even let you taste-test the kettle popcorn (yeah, like that could taste bad...).
  - **Alta Plaza** – The playground was completely rebuilt just over a year or two ago and is great for kids. There are also three tennis courts, a good wide long staircase on the south side for those exercise-inclined and a huge grassy area for dogs to ‘socialize’ on the north side. The first Sunday of the month is “Pug Day” where pugs from all over SF converge on Alta Plaza.
  - Finally, one of our family dog-walking, kid-toting, kite-flying favorites is **Crissy Field** on a weekend afternoon or a sunny evening in September. The Crissy Field sandy-gravel pathway between the Yacht Club and the Golden Gate Bridge is a jogger’s dream and is also a popular photop destination with out of town guests. Just don’t forget three things: a sweater or good windbreaker (it’s always chilly), your camera (those views!!!), and a few dollars for coffee or hot chocolate at the Warming Hut, a café-bookstore near Fort Point.
- Enjoy!**

UCSF School of Medicine  
Graduate Medical Education  
500 Parnassus Ave. MU 250E  
San Francisco, CA  
94143-0474  
tel 415.476.4562  
fax 415.502.4166  
www.medschool.ucsf.edu/gme

# 10 QUESTIONS FROM THE RESIDENT AND FELLOW AFFAIRS COMMITTEE

## **Russ Cucina, MD, MS**

*Assistant Professor of Hospital Medicine in the Department of Internal Medicine and Associate Medical Director of Information Technology for the UCSF Medical Center, responds to questions from the Resident and Fellow Affairs Committee about various IT topics, including UCare, single sign-on, Macintosh compatibility, and Note Writer.*



### **1. IT IS RUMORED THAT A COMMON PASSWORD SYSTEM HAS BEEN CREATED. WHAT SYSTEMS WILL THIS INITIALLY COVER, AND WHICH WILL SUBSEQUENTLY BE INCLUDED? WHEN WILL THIS SYSTEM BE FUNCTIONAL?**

Like every large decentralized organization, UCSF has the challenge of multiple user names and passwords. The two largest keepers of these are campus administration, which includes things like campus email and GALEN accounts, and the Medical Center, who is responsible for all clinical information systems and the clinical network within Moffitt/Long and Mount Zion. The campus and Medical Center are working on a project that will allow credentials (user name and password) to be shared that will be available in the foreseeable future, but a date has not been set. This will not cover individual departmental systems (PACS for example) but should improve over time.

### **2. WHAT SHORTCUTS CURRENTLY EXIST FOR RESETTING ONE'S PASSWORD TO ACCESS CLINICAL APPLICATIONS AND EMAIL?**

To easily reset your Medical Center password, go to <http://passwordreset.ucsfmedicalcenter.org>. You need to access the site to answer a series of identifying questions before you actually need password help. Once you've done that you, if you ever forget your Medical Center password or get locked out, you can go to this website. It doesn't cover your campus username or password, which includes most housestaff email accounts.

### **3. HOUSESTAFF HAVE MANY PASSWORDS TO KEEP TRACK OF AT EACH OF THE SEVERAL HOSPITALS WHERE THEY ROTATE. WHAT IS THE RECOMMENDED METHOD OF SAFELY MANAGING LOGINS AND PASSWORDS?**

There is no university-supplied solution, but there are secure technological solutions for either cell phone or PDA. There are many programs, some of which are free, that you can get for your PDA or smart phone where you can store your passwords securely. You could email your passwords to yourself using secure UCSF email, but if you lose that password then it doesn't help you. The important thing to remember is not to write them down and keep them somewhere insecure, like your white coat pocket.

### **4. IS UCARE HERE TO STAY? HAS THERE BEEN ANY CONSIDERATION OF ADOPTING ANOTHER ELECTRONIC MEDICAL RECORD SYSTEM WITH PROVEN SUCCESS, SUCH AS THE VA'S CPRS?**

UCare is definitely here to stay, but it won't stay forever in its current form. Everyone recognizes the software we have today is not the software you would want forever in your world-leading medical center. We are partnered with General Electric who writes UCare to guide their development and investment in this platform. They have a strong incentive to invest heavily in the development of this software. Our clinical end-users at UCSF hasn't seen the benefits of this yet, but will in the near future. UCSF will be the U.S. launch site for several of GE's new systems: their critical care system in fall 2008; the new pharmacy system in spring 2009; and computerized order entry in summer/fall 2009. The VA system is not an option even though it is possibly the best inpatient clinical system around. Because it's from the VA, it doesn't do pediatrics, obstetrics/gynecology, or billing, which means it can't be installed at a general hospital. It is also written in a now-obscure programming language called Mumps for which it is very difficult to find programmers.

### **5. WHEN WILL UCARE DISPLAY PATIENTS' CURRENT MEDICATIONS (MAR)?**

It's important to distinguish between a patient's medication list, which is the list of things that the physician and pharmacist agree that the patient should be getting, and the MAR (medication administration record) which is the nursing document that describes what the patient actually received. The MAR is a printed record that comes out of the existing pharmacy system that the nurses use to do their documentation. The new electronic pharmacy system available in spring of 2009 will have the eMAR (electronic MAR) that the nurses complete in UCare itself. The eMAR will take awhile, so in the mean time, we are working on a solution within the UCare desktop that will allow doctors, nurses, and pharmacists to see the medication list from the pharmacy system. It should be available within a few months.

**6. WITHIN UCARE ARE PLANS BEING MADE SO THAT PROVIDERS CAN APPEND NOTES OR ATTACH IMAGES OR SCANNED DOCUMENTS?**

This is a persistent technical challenge because of the limitations of the software architecture of UCare. The Medical Center has been harping on GE about this and has not been satisfied with the progress. This is an issue GE must fix, but we do not currently have a date for this.

**7. "NOTE WRITER" IS A TOOL THAT REPLACES THE WORD TEMPLATE SYSTEM FOR UCARE AND AUTOMATICALLY POPULATES PROGRESS NOTES WITH DATA. WHEN WILL THIS FUNCTION BE AVAILABLE FOR SERVICES OTHER THAN INTERNAL MEDICINE?**

Note Writer is a web-based user interface for physician note writing that was developed at UCSF. It imports the last 24 hours of vital signs from UCare (except ICU patients) and 25 basic labs (being expanded). It prevents you from putting the note on the wrong patient, which is the most common ongoing mistake in UCare. In addition, it unifies the resident note and the attending note for those services that do attending attestations. Note Writer was piloted in December 2007 on the Medicine service and went into production in March 2008. It has since gone live in many other services and will be rolled out to all services as quickly as support capacity allows. Estimated completion of the roll out is October 2008.

**8. WHAT IS THE CAUSE OF CLINIC PACS SYSTEMS RUNNING SLOWLY?**

This is usually due to low memory on the machine. The solution depends on who owns the machine. You should ask the clinic manager who owns the machine and who to contact to fix the problem.

**9. WILL ANY OF THE CLINICAL SYSTEMS BECOME MACINTOSH COMPATIBLE?**

There is no enterprise clinical system available anywhere that is compatible with Mac. The Mac platform is wonderful, but globally Mac has less than 4% market share and in the US they have less than 8% market share, so there is little business case for companies to write a clinical system for the Mac and GE has no plans to write UCare for the Mac. You can access UCare from a Mac through remote desktop, although it is not officially supported by the Med Center. The recommended option is to use Parallels to create a Windows environment on your Mac to use UCare. Many people at UCSF are doing this successfully.

**10. ARE THERE OTHER PROJECTS ON THE IT HORIZON THAT HOUSESTAFF SHOULD KNOW ABOUT?**

In addition to the projects listed above, the housestaff should know that the Medical Center has just funded the perinatal component of UCare, Centricity Perinatal.

8

**Meet the UCSF OFFICE OF GRADUATE MEDICAL EDUCATION**



Robert B. Baron, MD, MS  
Associate Dean, GME



Lorenzo Woo  
Director of Operations



Liza Asato  
Finance Analyst



Amy Day  
Manager, Resident  
and Fellow Affairs



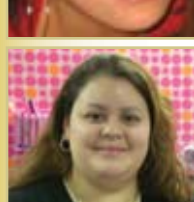
Gitanjali Kapur  
Education Technologies  
Analyst



Sharon Freeman  
Analyst to Associate  
Dean



Helen Shui  
Administrative Analyst



Heidi Garcia  
Accreditation

UCSF School of Medicine  
Graduate Medical Education  
500 Parnassus Ave. MU 250E  
San Francisco, CA  
94143-0474  
tel 415.476.4562  
fax 415.502.4166  
www.medschool.ucsf.edu/gme

# The Residents Report

**Editorial Staff:**  
 Robert B. Baron  
 Lorenzo Woo  
 Gitanjali Kapur

Many Thanks  
 The Dean's Office of  
 GME would like to  
 thank the following  
 for their many  
 contributions.

**Contributors**

- Josh Adler
- Patricia Cornett
- Russ Cucina
- Doug Eckman
- Ijje Fitzgerald
- Christine Glastonbury
- Pamela Hayes
- Rene Salazar
- Michael Saleh
- Josephine Tan
- Emily Von Schevan

& all Program  
 Coordinators for  
 sending us Department  
 Housestaff Awards.

UCSF School of Medicine  
 Graduate Medical Education  
 500 Parnassus Ave. MU 250E  
 San Francisco, CA  
 94143-0474  
 tel 415.476.4562  
 fax 415.502.4166  
[www.medschool.ucsf.edu/gme](http://www.medschool.ucsf.edu/gme)

## GME Diversity

Rene Salazar, MD, GME Director of Diversity

As director of diversity for the Office of Graduate Medical Education, I would like to welcome you all to UCSF! GME is committed to promoting increased recruitment, retention and advancement of fellows and residents from diverse groups including those traditionally underrepresented in medicine. We strive to promote cultural diversity across all training programs at UCSF and have several opportunities for interested trainees.

Several events are planned for this year including participation in the School of Medicine's Underrepresented in Medicine (UIM) mentorship dinner program, which was created to provide mentorship for medical students from diverse backgrounds. We will also host several social events including a new resident/fellow welcome dinner, a reception with the School of Medicine leadership, recruitment receptions and a second look visit program for interested applicants. Opportunities also exist to represent UCSF at various national meetings including the Student National Medical Association (SNMA), the National Hispanic Medical Association (NHMA), the Association of American Indian Physicians (AAIP), and the Gay and Lesbian Medical Association (GLMA).

For more information please contact me via email at [salazarr@medicine.ucsf.edu](mailto:salazarr@medicine.ucsf.edu) or telephone (415) 502-8156.

René Salazar, MD  
 GME Director of Diversity

### GME GRAND ROUNDS Monthly Conferences 3rd Tuesdays 12 noon - 1 pm

**Schedule 2008-2009**  
 July 15, 2008

*Changes in Public Health -  
 Mitch Katz, MD, Professor,  
 Departments of Medicine &  
 Epidemiology and Biostatistics*

- August 19, 2008
- September 16, 2008
- October 21, 2008
- November 18, 2008
- December 2008 - *No Grand Rounds*
- January 20, 2009
- February 17, 2009
- March 17, 2009
- April 21, 2009
- May 19, 2009
- June 16, 2009

<http://medschool.ucsf.edu/gme/grounds/index.html>

## G M E C y p h e r

Robert B. Baron, MD, MS

### Solve the Summer C y p h e r 2008

Lup cx, ctxvap kxv ylhr ytr blyt xn crsezmr,  
 ...huxj ytly kxv'aa rnbszrumr wscvcslyzxc  
 lup wizavsrc. Reru kxvs cvmmrccrc jzaa or  
 glshrp ok zgbrswrmyzxc lup vuzuyrupr  
 mxucrivrumrc. Z dvlsluyrr kxv, ytrsr jzaa  
 mrsylzuak or yzgrc jtru wszrupc xs wlgzak  
 vsdr kxv yx bvscvr gxsr cruzoar ruplexsc  
 jzyt gxsr yludzoar srjlspsc. Lup ytrsr jzaa or  
 yzgrc jtru kxv lsr yrgbyrp yx ylhr ytrzs lpezmr.

Ovy Z txbr kxv'aa srgrgors, pvszud ytxc  
 yzgrc xw pxvoy lup wscvcslyzxc, ytly ytrsr zc  
 uxytzud ulzer loxvy kxvs zgbvacr yx mtludr  
 ytzc jxsap. Ormlvcr laa zy ylhr zc xur lmy xw  
 crsezmr, xur oaxj ldlzucy zuqvcyzmr, yx crup  
 wxsyt ytly yzuc szbbar xw txbr...

Crulyxs Olslmh Xolgl, Mxggrumgruy Lpssrc  
 ly Jrcarklu Vuzerczyk

*Instructions: The above is an encoded quote from a famous person. Solve the cypher by substituting letters. Send your answers to Amy Day, Manager, Resident/Fellow Affairs: [daya@medsch.ucsf.edu](mailto:daya@medsch.ucsf.edu); correct answers will be entered in a drawing to win a \$50 gift certificate!*

The April 2008 Cypher answer was:

***"The executive has no right, in any case, to decide the question, whether there is or is not cause for declaring war".  
 James Madison***

Thank you to all who submitted answers to the cypher in the SPRING 2008 edition of the Residents Report. We received numerous correct submissions, and the randomly selected winner was:

**Tara Collins, MD, MPH  
 Psychiatry Resident, PGY1**

**Congratulations Tara!**  
 She received a \$50 gift certificate.